



ATTENTION
OBSERVE PRECAUTIONS
FOR HANDLING
ELECTROSTATIC
DISCHARGE
SENSITIVE
DEVICES

Part No./型号: ST-3528WW

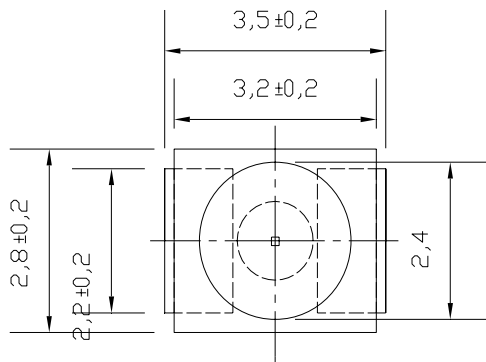
1、Features/特征:

- Emitting Color/发光颜色: White/白色
- Lens Type/封装特性: Yellow Diffused/黄色散射
- Device Outline/外形特征: 3.5×2.8×1.9 (unit:mm)
- RoHS compliant/符合 RoHS 标准

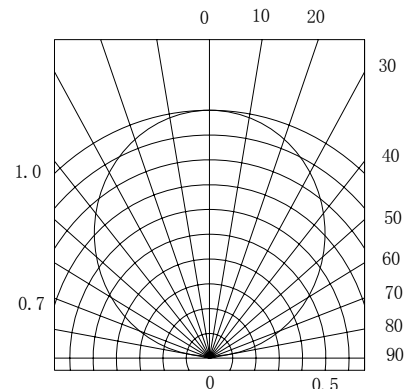
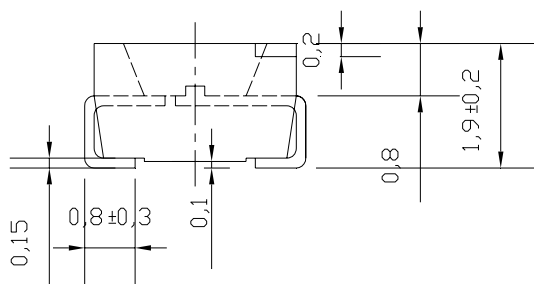
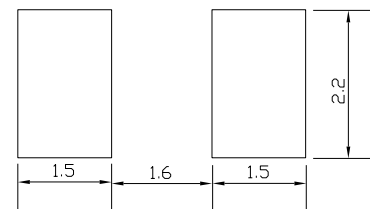
2、Applications/应用:

- Backlight for Mobile, Machine Vision, LCD Display/手机、电话、显示屏背光源
- Backlight in Dashboard and switch of Automive/汽车仪表盘、记程器背光源

3、Outline Dimensions/产品外形尺寸(units:mm):



被推荐的回焊焊盘尺寸:



SPATIAL DISTRIBUTION



4、Absolute maximum ratings/极限参数 (Ta = 25°C):

Head Quarter: No. 56, Ke Da Road, Hi-Tech Park, Ningbo

Http: //www.sunpu-opto.com

Rev: B/3



| Parameter 参数 | Symbol 符号 | Test Condition 测试条件 | Value 参数 | | Unit 单位 |
|---------------------------------|--------------|------------------------|----------|------|--------------|
| | | | Min. | Max. | |
| Power Dissipation 损耗功率 | Pd | — | — | 90 | mW |
| Reverse Voltage 反向电压 | VR | IR = 30 μ A | 5 | — | V |
| Pulse Current 正向峰值电流 | IFp | Duty=0.1, 1kHz | — | 100 | mA |
| Forward Current 正向工作电流 | IFm | — | — | 25 | mA |
| Operating Temperature 工作温度范围 | Topr | — | -40 | +85 | $^{\circ}$ C |
| Storage Temperature 储存温度范围 | Tstr | — | -40 | +85 | $^{\circ}$ C |

5、Electrical and optical characteristics/光电参数 (Ta = 25 $^{\circ}$ C):

| Parameter 参数 | Symbol 符号 | Test Condition 测试条件 | Value 参数 | | | Unit 单位 |
|---------------------------------|----------------|------------------------|----------|------|------|------------|
| | | | Min. | Typ. | Max. | |
| Forward Voltage 正向电压 | VF | IF = 20mA | — | 3.2 | 3.6 | V |
| Reverse Current 反向电流 | IR | VR = 5V | — | — | 30 | μ A |
| Chromaticity coordinates 色坐标 | CIE-X | IF = 20mA | — | 0.33 | — | ----- |
| | CIE-Y | | | 0.33 | | |
| Luminous Intensity 发光强度 | Iv | IF = 20mA | 500 | 1200 | — | mcd |
| Viewing Angle 发光指向角 | 2 θ 1/2 | IF = 20mA | — | 120 | — | Deg. |



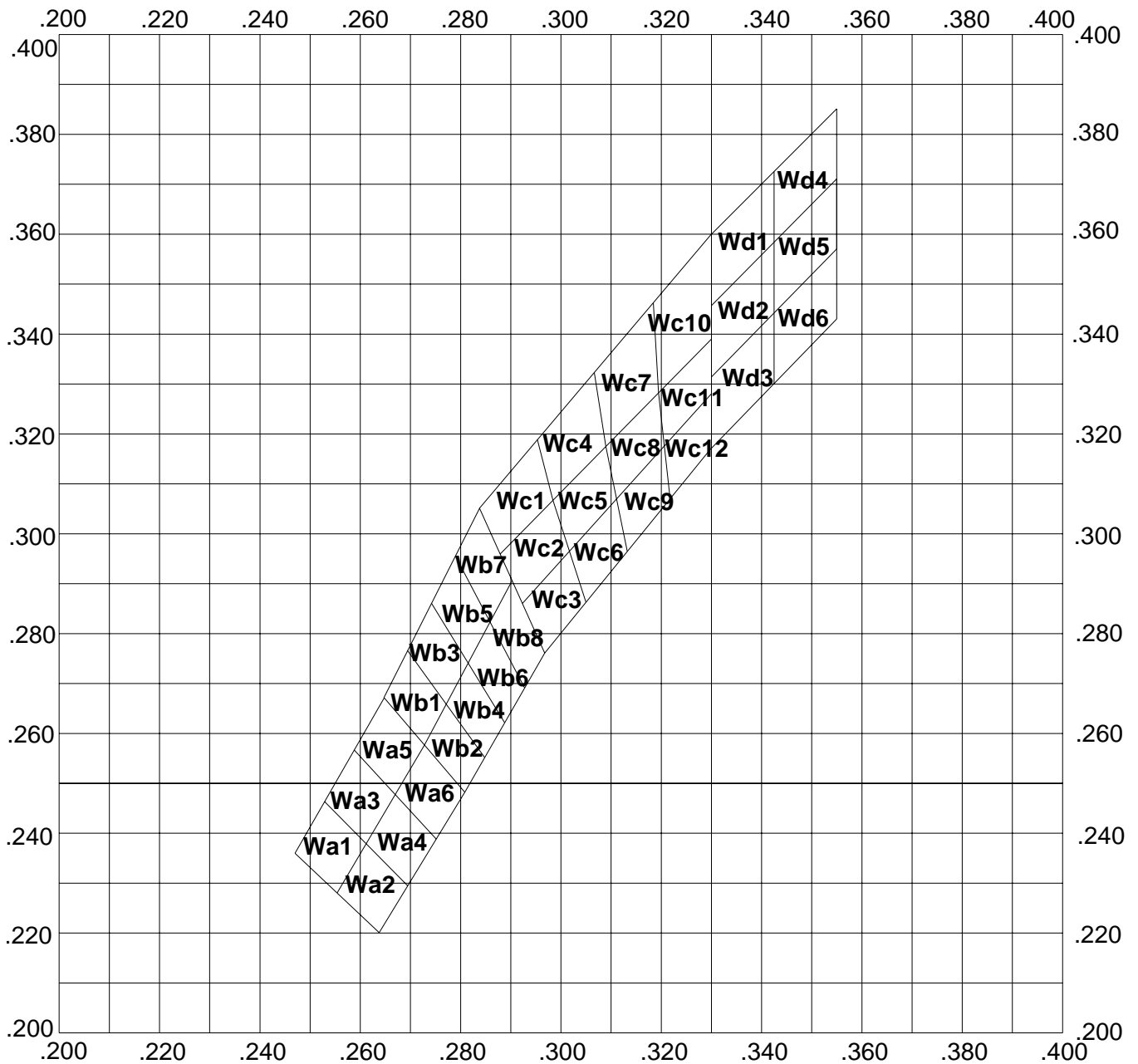
6、Chromaticity coordinates Ranks /色坐标分档:

色坐标误差: ± 0.01

| 代码 | 轴 | 参数 | | | | 代码 | 轴 | 参数 | | | |
|------|---|-------|-------|-------|-------|------|---|-------|-------|-------|-------|
| Wa1 | X | 0.255 | 0.247 | 0.253 | 0.261 | Wa2 | X | 0.261 | 0.269 | 0.264 | 0.255 |
| | Y | 0.228 | 0.236 | 0.246 | 0.238 | | Y | 0.238 | 0.229 | 0.220 | 0.228 |
| Wa3 | X | 0.261 | 0.253 | 0.259 | 0.267 | Wa4 | X | 0.267 | 0.275 | 0.269 | 0.261 |
| | Y | 0.238 | 0.246 | 0.257 | 0.248 | | Y | 0.248 | 0.239 | 0.229 | 0.238 |
| Wa5 | X | 0.267 | 0.259 | 0.265 | 0.273 | Wa6 | X | 0.273 | 0.281 | 0.275 | 0.267 |
| | Y | 0.248 | 0.257 | 0.267 | 0.258 | | Y | 0.258 | 0.248 | 0.239 | 0.248 |
| Wb1 | X | 0.273 | 0.265 | 0.269 | 0.277 | Wb2 | X | 0.277 | 0.285 | 0.281 | 0.273 |
| | Y | 0.258 | 0.267 | 0.277 | 0.266 | | Y | 0.266 | 0.255 | 0.248 | 0.258 |
| Wb3 | X | 0.277 | 0.269 | 0.274 | 0.282 | Wb4 | X | 0.282 | 0.289 | 0.285 | 0.277 |
| | Y | 0.266 | 0.277 | 0.286 | 0.274 | | Y | 0.274 | 0.262 | 0.255 | 0.266 |
| Wb5 | X | 0.282 | 0.274 | 0.279 | 0.286 | Wb6 | X | 0.286 | 0.293 | 0.289 | 0.282 |
| | Y | 0.274 | 0.286 | 0.295 | 0.282 | | Y | 0.282 | 0.269 | 0.262 | 0.274 |
| Wb7 | X | 0.286 | 0.279 | 0.284 | 0.290 | Wb8 | X | 0.290 | 0.297 | 0.293 | 0.286 |
| | Y | 0.282 | 0.295 | 0.305 | 0.291 | | Y | 0.291 | 0.276 | 0.269 | 0.282 |
| Wc1 | X | 0.288 | 0.284 | 0.295 | 0.298 | Wc2 | X | 0.298 | 0.302 | 0.292 | 0.288 |
| | Y | 0.296 | 0.305 | 0.319 | 0.307 | | Y | 0.307 | 0.296 | 0.286 | 0.296 |
| Wc3 | X | 0.297 | 0.292 | 0.302 | 0.305 | Wc4 | X | 0.298 | 0.295 | 0.307 | 0.309 |
| | Y | 0.276 | 0.286 | 0.296 | 0.286 | | Y | 0.307 | 0.319 | 0.332 | 0.317 |
| Wc5 | X | 0.309 | 0.311 | 0.302 | 0.298 | Wc6 | X | 0.305 | 0.302 | 0.311 | 0.313 |
| | Y | 0.317 | 0.307 | 0.296 | 0.307 | | Y | 0.286 | 0.296 | 0.307 | 0.296 |
| Wc7 | X | 0.309 | 0.307 | 0.318 | 0.319 | Wc8 | X | 0.319 | 0.321 | 0.311 | 0.309 |
| | Y | 0.317 | 0.332 | 0.346 | 0.328 | | Y | 0.328 | 0.318 | 0.307 | 0.317 |
| Wc9 | X | 0.313 | 0.311 | 0.321 | 0.322 | Wc10 | X | 0.319 | 0.318 | 0.330 | 0.330 |
| | Y | 0.296 | 0.307 | 0.318 | 0.307 | | Y | 0.328 | 0.346 | 0.360 | 0.339 |
| Wc11 | X | 0.330 | 0.330 | 0.321 | 0.319 | Wc12 | X | 0.322 | 0.321 | 0.330 | 0.330 |
| | Y | 0.339 | 0.328 | 0.318 | 0.328 | | Y | 0.307 | 0.318 | 0.328 | 0.317 |
| Wd1 | X | 0.330 | 0.330 | 0.343 | 0.343 | Wd2 | X | 0.343 | 0.343 | 0.330 | 0.330 |
| | Y | 0.346 | 0.360 | 0.373 | 0.359 | | Y | 0.359 | 0.345 | 0.331 | 0.346 |
| Wd3 | X | 0.330 | 0.330 | 0.343 | 0.343 | Wd4 | X | 0.343 | 0.343 | 0.355 | 0.355 |
| | Y | 0.317 | 0.331 | 0.345 | 0.331 | | Y | 0.359 | 0.373 | 0.385 | 0.371 |
| Wd5 | X | 0.355 | 0.355 | 0.343 | 0.343 | Wd6 | X | 0.343 | 0.343 | 0.355 | 0.355 |
| | Y | 0.371 | 0.357 | 0.345 | 0.359 | | Y | 0.331 | 0.345 | 0.357 | 0.343 |



Diagram





7、Typical electrical/optical characteristic curves/光电特性曲线:

Fig.1 正向电流 Vs. 正向电压

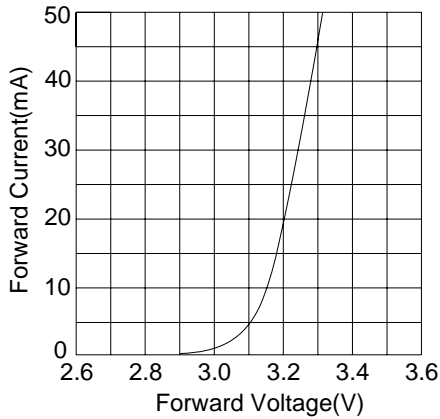


Fig.2 相对亮度 Vs. 正向电流

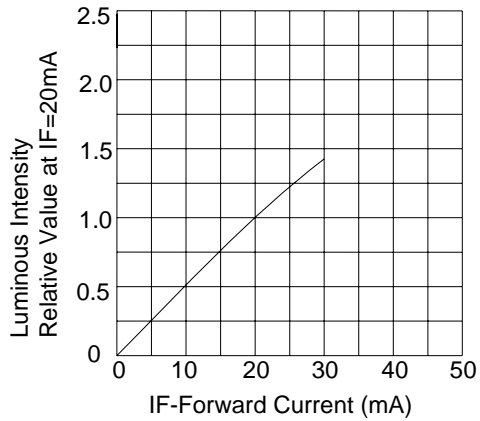


Fig.3 正向电流 Vs. 环境温度

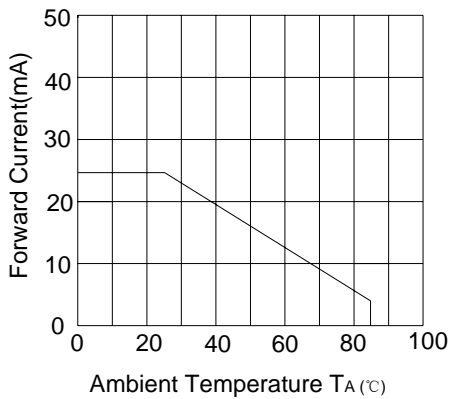


Fig.4 相对亮度 Vs. 环境温度

